

FALCON 106-110 AQUARIUS –S



BUILDER:	Falcon	LOA:	32.3m / 106'
YEAR:	May 2002	BEAM:	7.2m / 23'7
FLAG:	British	DRAFT:	2.1m / 7'
DESIGNER:	Falcon	SPEED:	24 / 29 knots
HULL:	Fiberglass	ACCOM:	10-12 guests

CLASSIFICATION: RINA +A-1.1'Y' and MCA

ENGINES: 2 x 2.280 hp MTU 12V396 (W5 MTU partially completed May 2012)

Lying: Singapore

PRICE: USD 2.975.000
Commercial vessel VAT compliant)

MAIN CHARACTERISTICS

General

BUILDER Falcon, Viareggio, Italy
YEAR: May 2002
L.O.A: 32.3m / 106'
(110' including optional swim platform extension)
BEAM: 7.1m / 23'2"
DRAFT: 2.5m / 8'2"
FLAG: British. Isle of Man Commercial registry.
DISPLACEMENT: Half load approx 115 tons

Capacities

FUEL CAPACITY: 17.400 liters in three tanks
WATER CAPACITY: 3.440 liters in one tank
WATERMAKER: Two Technicomar Water makers producing about 280 liters per hour
Inbuilt Shore Water Softener.

GREY WATER: 1.520 litres in three tanks
BLACK WATER: 1.450 litres in one tank
SEWAGE TREATMENT: Hamman HL CONT treatment plant for black and grey water.

Speed and Range under power

MAXIMUM SPEED: 29 knots (@ light load and clean bottom)
CRUISING SPEED: 25 knots

MACHINERY

W5 MTU partially service completed May 2012

ENGINE: Two_MTU 12V 396 of 1680kw (2.280hp) each
ENGINES HOURS: Approximately 2050 in May 2012

GEARS: Two_v-drive ZF BW 465

Generators & Electricity

GENERATORS: Two Kohler 40kw (50KVA) 380-230VAC @ 50HZ
GENERATOR HOURS: Approximately 4.700 and 5350 hours May 2012
SHORE POWER: Two 380V/50hz connections
FREQUENCY CONVERTER: ATLAS classic with shore power smart box
AIR CONDITIONING: Frigif 216000 BTU, Summer Cycle. 260000 BTU Winter cycle.

Other Machinery

BCS 35hp, with 350kg Thrust, Bow Thruster
Hydraulic Trim tabs
Touch screen automatic engine room ventilation control system.

ACCOMMODATION

Sleeps 10 -12 guests in five cabins all with en suite bathrooms (Jacuzzi bath in VIP and owners cabins). Joinery is a combination of American cherry and birds-eye maple veneers and hardwoods. The two twin cabins each have additional single Pullman berths. Crew quarters accommodate six in four cabins with three bathrooms.

Salon and dining areas

The salon dining area is located forward of the main deck salon. The dining area can seat ten people. The salon seating area has two fabric upholstered sofas, four armchairs, and two coffee tables. The salon is equipped with a BOSE stereo system; satellite TV; a 42' plasma screen and a Movie screen to convert the salon into a movie theater. The bar area has one vitrifrigo 50 litre fridge and one Icer-ette icemaker.

GALLEY & LAUNDRY EQUIPMENT

Galley + Pantry Equipment:

- 90cm Franke stainless steel oven
- Overhead Range Hood.

- Miele Dishwasher
- Miele 150 liter freezer
- Four Liebherr frontloading Fridges
- Two Liebherr 80 liter frontloading Freezers
- Nespresso Coffee Machine.
- Tea + coffee station

- Electrolux six element vitroceramic stove
- SMEG microwave, Panasonic Microwave
- Icemaker + fridge in saloon
- Fridge in owners cabin

- Bremar icemaker in pantry
- Icer-ette Ice maker on sun deck
- Vitrifrigo 50 litres Fridge on sun deck
- Wetbar on sundeck
- Crew mess with Siemens 6kg Front Load Washing Machine, LG 9kg Front Load Drier and 30Litre Liebherr Fridge/Freezer and hot cold sink

- Grohe stainless steel double sink with in-sinkerator

Laundry Equipment:

- Bosch 6kg Front Load Washing Machine.
- Indesit 6k front load drier

COMMUNICATION, NAVIGATION & ENTERTAINMENT EQUIPMENT

Communication Equipment

- Delta Nav Intercom system
- Two SAILOR RT4822 DSC VHF radios
- Three ICOM portable VHF radios
- Sea Tel 4094 SAT TV system
- CCTV Security colour flat screen in W/house + Cptns Cabin with cameras in Engine room and main aft deck
- RAYTHEON ST60 system
- ABB Nera mini M SATCOM
- Siemens switchboard with phone in all cabins, salon, bridge, galley and exterior.
- GSM telephone
- FURUNO DFAX weather fax
- FURUNO NX 500 navtex receiver
- Printer
- Digital Yacht Share receiver / router

Onboard Wireless Burglar/Intruder Alarm System.

Navigation Equipment

- RAYTHEON Log & Echo sounder
- Two GPS interfaced with plotter & autopilot
- Lorenz world map 10" plotter + ACS
- Navicontrol AP3003 Autopilot interfaced with GEONAV 11 GPS receiver / plotter

Entertainment Equipment

- SHARP LCD TVs, Dvd and Video Players in all Guest cabins
- Fujitsu 42" plasma TV in salon
- Movie screen + SONY projector in main salon
- BOSE stereo system in salon + speakers on main and upper decks.
- SEATEL satellite TV system
- TV + Video in captain's cabin + Crew mess
- Seven NOKIA decoders
- Echostar SR35 decoder
- SONY stereo system in each guest cabin and Wheelhouse.
- QUATTRO audio / video control
- iPod dock

TENDERS & TOYS

- Novurania 4.3m RIB tender with 70 hp Yamaha 2 stroke outboard
- YAMAHA XL-700 Jetski

DECK EQUIPMENT

- Four deck Bollards
- Sanguinetti 380 VAC Tender Crane 800kg
- Salt water wash down system
- Remote control spotlight
- Portable side boarding ladder.
- Two electric Anchor winches
- Two Anchors galvanized
- Retractable electric hydraulic gangway
- Two retractable aft capstans
- Swimming ladder
- Awning on sun deck.

SAFETY & SECURITY EQUIPMENT as per MCA requirements

- CO2 Fire control system with remote operation
- SHIPGUARD fire alarm system
- Safe in owners cabin, VIP cabin & Captain's cabin
- Parachute & hand held flares, smoke floats.
- Breathing Apparatus.
- Closed circuit TV, engine room and aft deck
- Four life rings, 2x man overboard light, 2 x Man Overboard smoke and light.
- Three 10 man life rafts
-



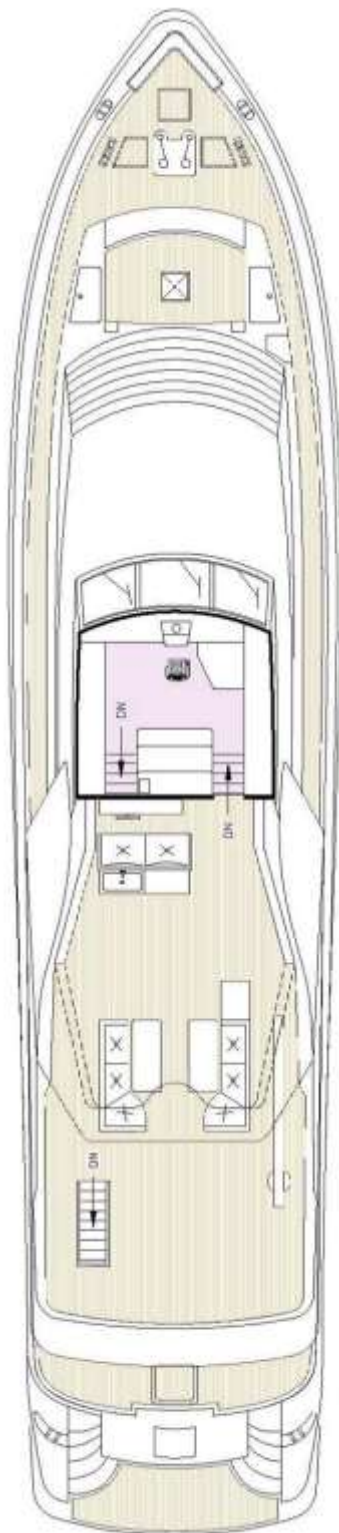
Comments

A professional crew has maintained AQUARIUS-S without a fixed budget. AQUARIUS-S is without a doubt the finest and best maintained Falcon in this size range available. The 106 offers 80cm more beam than the smaller 100' Falcon, which results into about 1/5 extra volume that is very noticeable throughout the yacht.

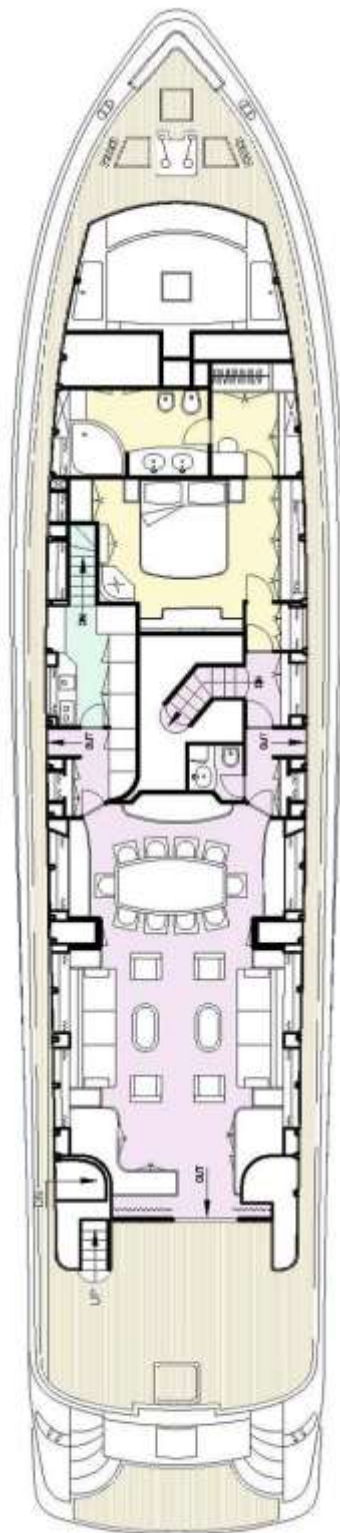
The Falcon 106 has similar interior volume and beam as the Falcon 115. The Falcon 115 has a larger aft deck and a larger swim platform. A new Falcon 115, with the extensive equipment list of AQUARIUS S, costs approximately EUR 8.6m.

AQUARIUS-S has an excellent layout with one master cabin, two beamy VIP cabins and two twin cabins. Thanks to the attractive layout, the yacht has an excellent charter history and can be available on a try-before-you-buy basis.

AQUARIUS-S is offered at less than one third of the full replacement cost of the Falcon 115' model which replaced the 106 model. The Falcon 115 has about the same beam, internal volume and layout. The Falcon 115 does have a larger swim platform and longer aft + sundecks. The 106 can easily be extended to 110' length overall by extending the swim platform, as is done on more recent Falcon Yachts.



UPPER DECK



MAIN DECK



LOWER DECK







Main deck dining area



Main deck VIP cabin (main deck forward)



Hull deck VIP cabin (hull deck forward)



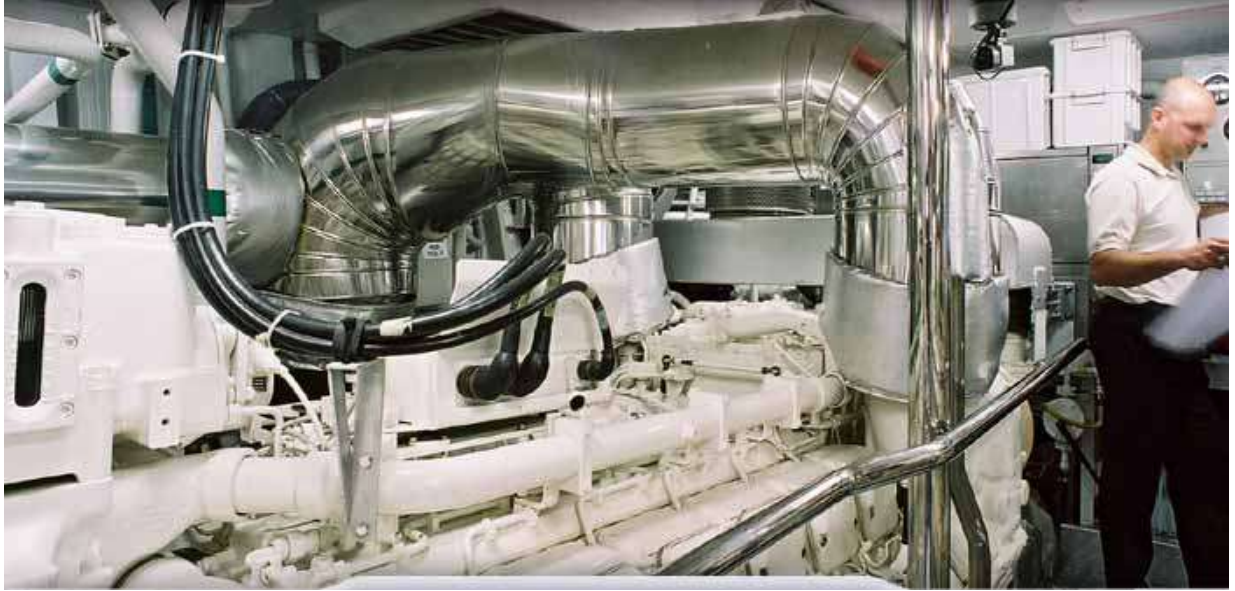
Full width owners cabin (hull deck aft)



Starboard Twin Cabin (with pulman berth)



Port Twin Cabin (with pulman berth)



Engine room

ABOVE DETAILS ARE BELIEVED TO BE CORRECT BUT CAN NOT BE USED FOR CONTRACT. A BUYER IS ADVISED TO HIRE A QUALIFIED MARINE SURVEYOR TO VERIFY ALL DETAILS AND THE CONDITION OF THE YACHT.